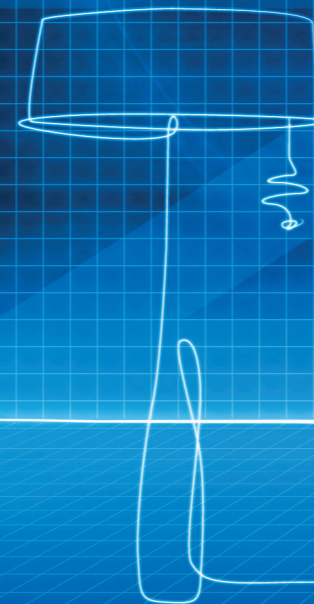
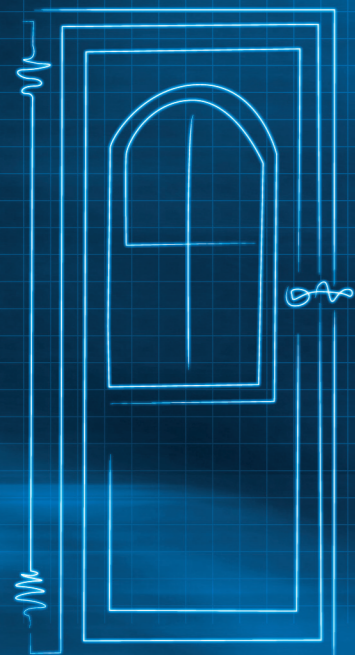


ZR10

ASSEMBLY GUIDE



Reebok

Reebok

reebokfittessequipment.com/productsupport

01

Images for illustration purposes only



04



05



02



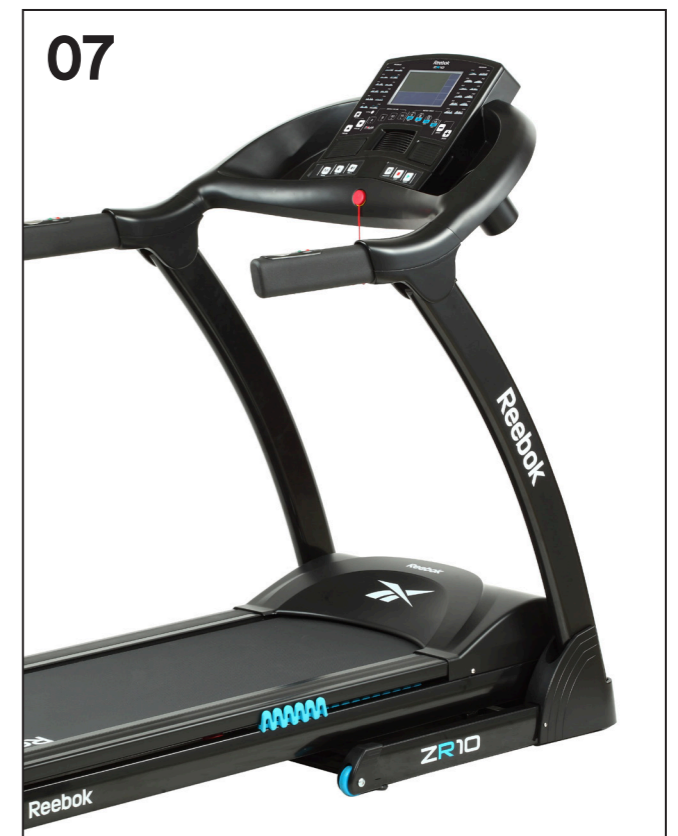
03



06



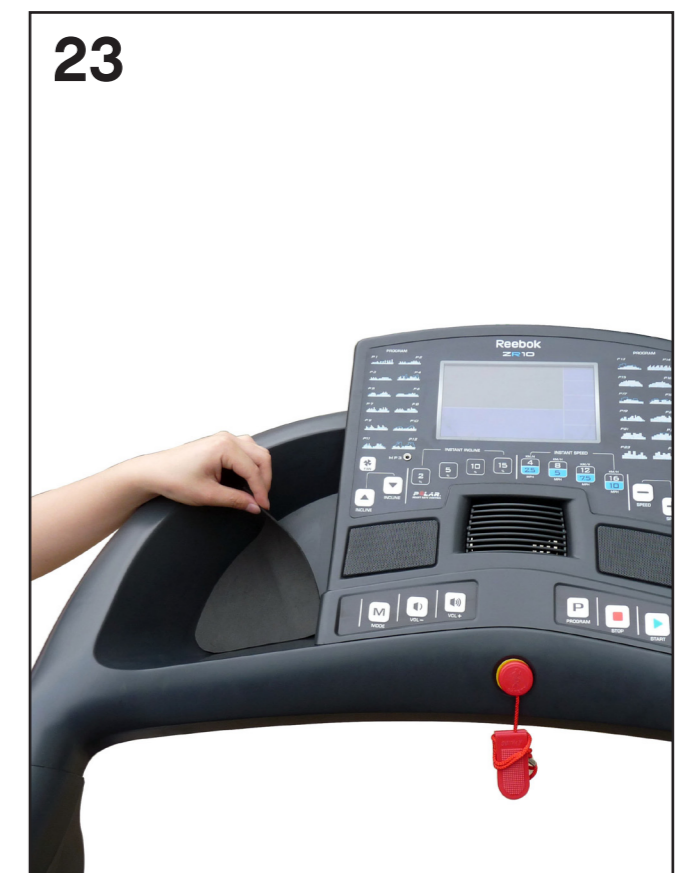
07



Images for illustration purposes only



Images for illustration purposes only



Images for illustration purposes only

24

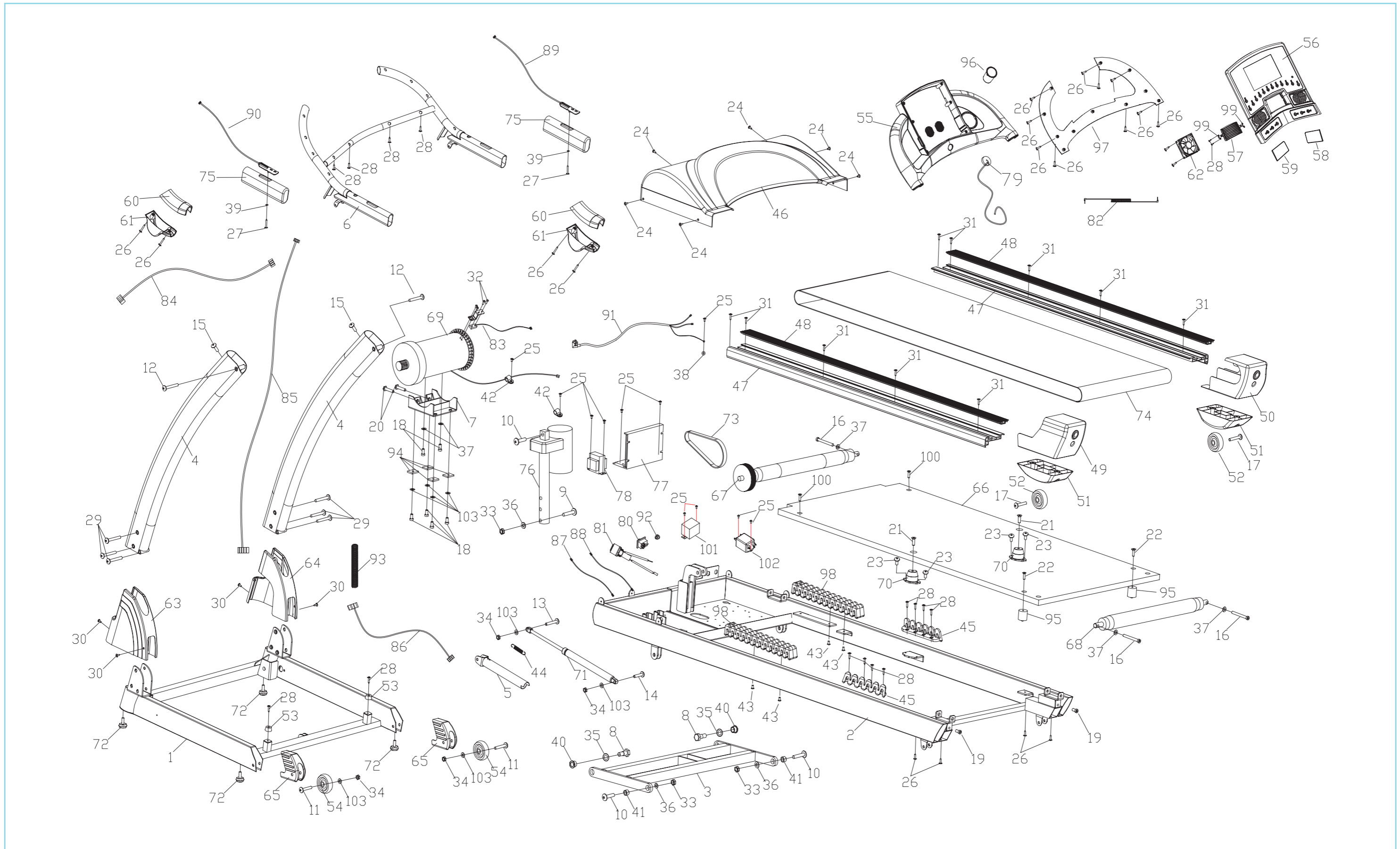


25



26



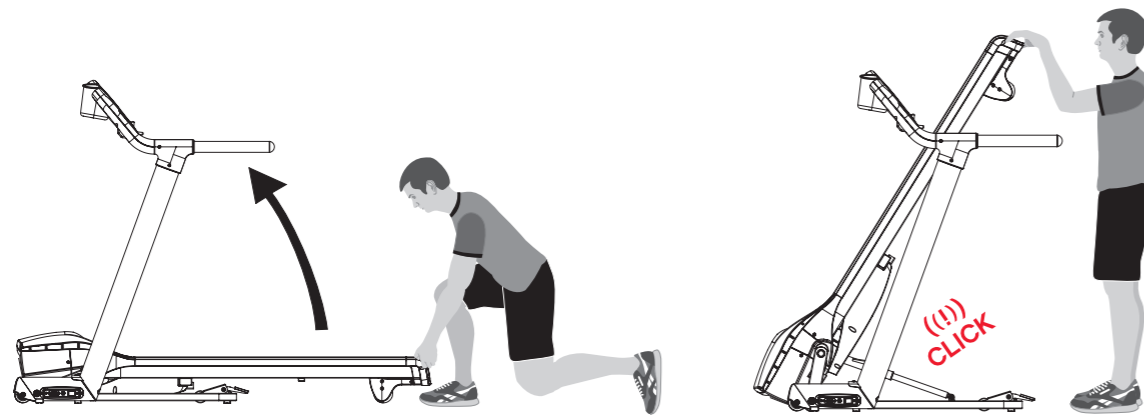


Part	Name	QTY	Part	Name	QTY
1	Base frame welding	1	28	Cross bolt ST4*16	18
2	Main frame welding	1	29	Inner hex bolt M8*55*20	6
3	Incline frame welding	1	30	Cross bolt ST4*20	4
4	Upright post welding	2	31	Cross bolt ST4*15	12
5	Feet pad welding	1	32	Cross bolt ST3*10	2
6	Handle bar welding	1	33	Nut M10 (black)	3
7	Motor board welding	1	34	Nut M8	4
8	Inner hex bolt M12*Ø14*35*19 (black)	2	35	Flat washer Ø14	2
9	Inner hex bolt M10*60*20 (black)	1	36	Flat washer Ø10	3
10	Inner hex bolt M10*35*20	3	37	Flat washer Ø8	8
11	Inner hex bolt M8*55*20 (black)	2	38	Washer Ø5	1
12	Inner hex bolt M8*50*20 (black)	2	39	Flat washer Ø4.5x Ø12x1.0(black)	4
13	Inner hex bolt M8*40*20 (black)	1	40	Power metallurgy cover Ø24*Ø19*Ø14*14*3	2
14	Inner hex bolt M8*30*20 (black)	1	41	Power metallurgy cover Ø17*Ø10*12	2
15	Inner hex bolt M8*20 (black)	2	42	Wire clamp	1
16	Inner hex bolt M8*75	3	43	Cross bolt M6x20 (black)	4
17	Motor bolt welding	1	44	Spring	1
18	Inner hex bolt M8*15 (black)	6	45	Decorate piece	2
19	Inner hex bolt M8*10	2	46	Motor cover (up)	1
20	Outside hex bolt M8*75	1	47	Side rail	2
21	Cross bolt M8*25	2	48	Decorate strip	2
22	Cross bolt M6*25	2	49	Rear cover (left)	1
23	Cross bolt M6*10	4	50	Rear cover (right)	1
24	Cross bolt M5*10 (black)	6	51	Rear cover feet pad	2
25	Cross bolt M4*10	8	52	Wheel Ø46	2
26	Cross bolt ST4*16 (black)	19	53	Taper cushion	2
27	Cross bolt ST4*50	2	54	Wheel Ø52	2

Part	Name	QTY	Part	Name	QTY
55	Computer cover	1	82	MP3 connect wire	1
56	Place with the computer	1	83	Inductor	1
57	Fan air outlet	1	84	Wire L1	1
58	Fan cover (right)	1	85	Wire L2	1
59	Fan cover (left)	1	86	Wire L3	1
60	Handle bar cover (up)	2	87	Power supply connect wire (red)	1
61	Handle bar cover (down)	2	88	Power supply connect wire (black)	1
62	Fan	1	89	Speed wire and handle pulse wire set	1
63	Base frame cover (left)	1	90	Incline wire and handle pulse wire set	1
64	Base frame cover (right)	1	91	Power supply wire	1
65	Ellipse round stuff	2	92	Wire buckle	1
66	Running board	1	93	Wire protect cover	1
67	Rear roller	1	94	Square cushion	4
68	Back roller	1	95	Column cushion	2
69	Motor	1	96	Bottle holder	1
70	Cushion with seat	2	97	Computer back cover	1
71	Cylinder	1	98	Zig cushion	2
72	Taper feet pad	4	99	Fan flap fix sheet	2
73	Motor belt	1	100	Cross bolt M6*65	2
74	Running belt	1	101	Filter	1
75	Foam	2	102	Inductor	1
76	Incline motor	1	103	Flat washer Ø8	8
77	Controller	1	104	Silicon oil	1
78	Transformer	1	999	Hard ware kit	1
79	Safety key	1	999-A	T Allen wrench 6*80	1
80	Switch	1	999-B	Cross allen wrench 14*17*75	1
81	Fuse seat with wire	1			

Folding machine:

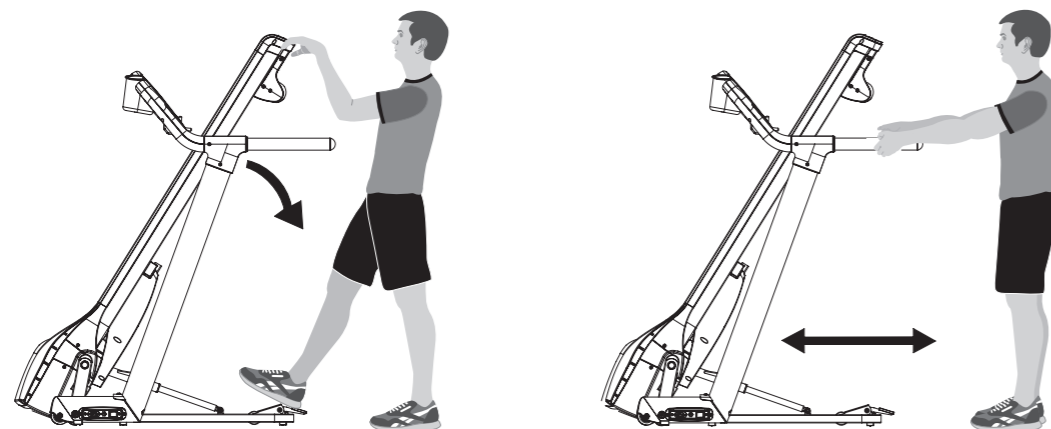
1. Ensure the running belt is at incline level 0 and is flat.
2. Switch off and unplug the machine.
3. Lift the rear of the running deck towards the computer, the cylinder (below) will click and lock into position and secure the machine upright.
4. Pull the running deck towards you slightly to ensure it has locked into position fully before leaving the machine.



Unfolding machine:

1. Stand directly behind the machine facing the running deck.
2. Place both hands on the handlebars.
3. Push your foot downwards on the middle section of the cylinder and soft drop to disengage the locking mechanism whilst pushing the running deck forwards towards the computer gently.
4. Slowly pull the running deck towards you slightly.
5. Release the deck and move from the rear of the machine.
6. The running deck will slowly lower towards the floor until it is in the correct position for use.

NOTE: The machine has a soft drop mechanism so the running deck will slowly lower to the ground safely



Transport:

1. Fold up the treadmill as per the above instructions.
2. Tilt treadmill towards you until wheels engage.
3. Manoeuvre the treadmill to desired location.
4. Ensure treadmill is level.
5. Unfold as per the above instructions.

Correct use:

We recommend you use your treadmill in the following way:

